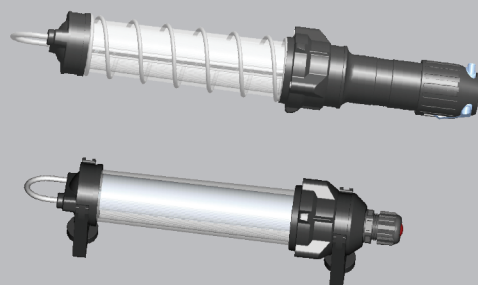




Operating instructions

CZ1260 Explosion-proof
overhaul (equipment) light fittings



CZ ELECTRIC CO.,LTD.

Add: No.1 Qixing Rd, Qixing Town, Nanhu District, Jiaxing,Zhejiang,P.R.China
Tel: +86-573-83888999 Fax: +86-573-83885001 P.C.: 314002
Http: www.cz-ex.com E-mail: cz@cz-ex.com



Purpose of these instructions

- ◎ Working in hazardous areas, the safety of personnel and plant depends on complying with all relevant safety regulations.
- ◎ Staff working on assembly and maintenance should have a particular responsibility. They require precise knowledge of the applicable standards and regulations.
- ◎ These instructions give a brief summary of the most important safety measures. It supplements the corresponding regulations which the staff must study.



SAFETY INSTRUCTIONS

- ◎ Use explosion-proof overhaul (equipment) light fittings only for its intended purpose.
- ◎ This series explosion-proof overhaul (equipment) light fittings are not suitable for Zone 0 hazardous areas!
- ◎ Incorrect or impermissible use or non-compliance with these instructions invalidates our warranty provision.
- ◎ No changes to the device impairing its explosion-proof performance are permitted.
- ◎ Use the explosion-proof overhaul (equipment) light fittings only if they are clean and undamaged.
- ◎ Any damage can invalidate the Ex-performance.
- ◎ Observe the following during installation and operation:
 - National safety regulations;
 - National accident prevention regulations;
 - National installation regulations (e.g. IEC60079-14、 EN60079-14) ;
 - Generally recognized technical regulations;
 - Safety guidelines in these operating instructions;
 - Characteristic values given on this series explosion-proof overhaul (equipment) light fittings.

Conformity to standards

This series explosion-proof overhaul (equipment) light fittings are designed, manufactured and tested in accordance with ISO 9001.

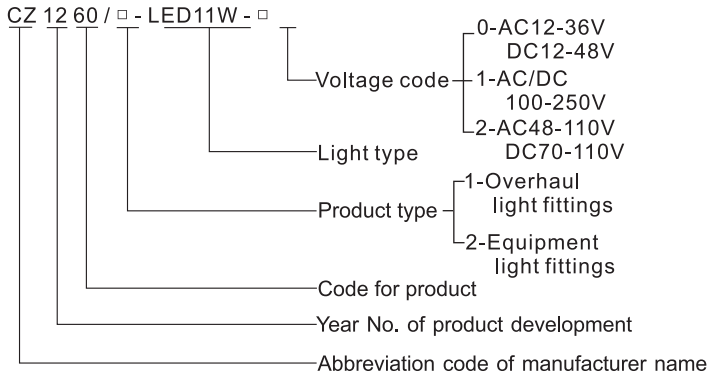
This series explosion-proof overhaul (equipment) light fittings comply with the following regulations and standards:

IEC 60079-0: 2011	EN 60079-0: 2012
IEC 60079-1: 2014	EN 60079-1: 2014
IEC 60079-7: 2015	EN 60079-7: 2015
IEC 60079-31: 2013	EN 60079-31: 2014

Applicable scope

The series products is suitable for indoors and outdoors, the explosive hazardous area zone 1, zone 2 and the dust hazardous zone 21 and zone 22, work as overhaul light fittings and equipment light fittings.

Model and implication



Technical data

◎ Ex mark:

II 2GD Ex d e II C T5 Gb; Ex tb III C T95°C Db (Ta ≤ +55°C)
 II 2GD Ex d e II C T6 Gb; Ex tb III C T80°C Db (Ta ≤ +40°C)

◎ Degree of protection: IP66(fixed)/IP67(handheld)

◎ Ambient temperature : -40°C/-20°C ≤ Ta ≤ +40°C/+55°C

◎ Rated voltage: AC12-36V,50/60Hz DC12-48V
 AC/DC 100-250V,50/60Hz
 AC48-110V,50/60Hz DC70-110V

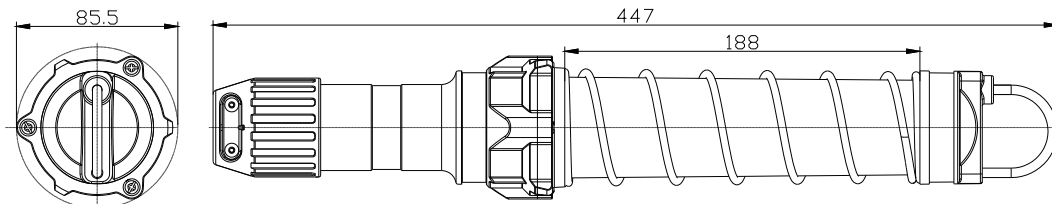
◎ Rated power : 11W

◎ Light type : LED

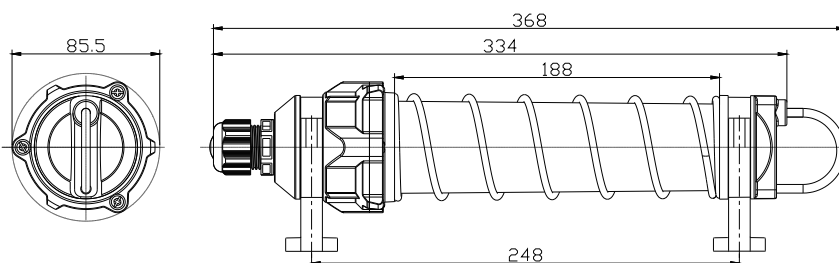
◎ Cable entry:(1)overhaul light fittings Outside diameter: Φ8-17mm
 (2)equipment light fittings (Standard configuration)Moulded plastic 1×M25×1.5 ,Outside diameterΦ8-17mm

◎ Terminal:L,N cage type terminal 2-2.5mm²,

Outline and installation dimensions



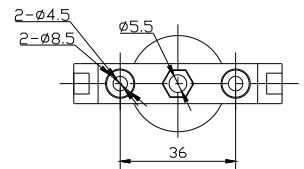
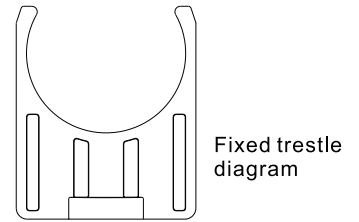
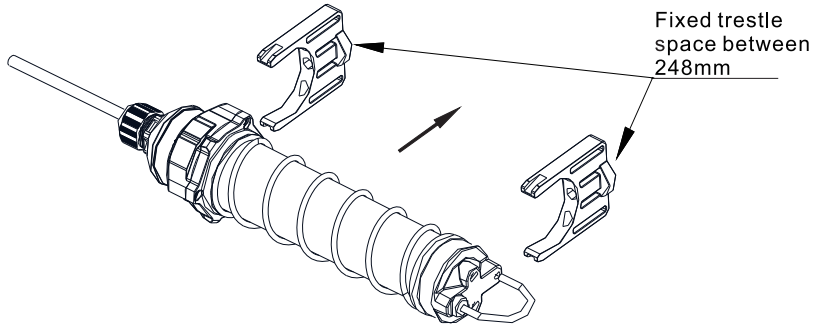
Cz1260 Explosion-proof overhaul light fittings(handheld) Outline dimensions



Cz1260 Explosion-proof equipment light fittings(fixed) Outline dimensions

Note: As the request of customer,the equipment light can be optional stainless steel mesh cover.

Mounting diagram



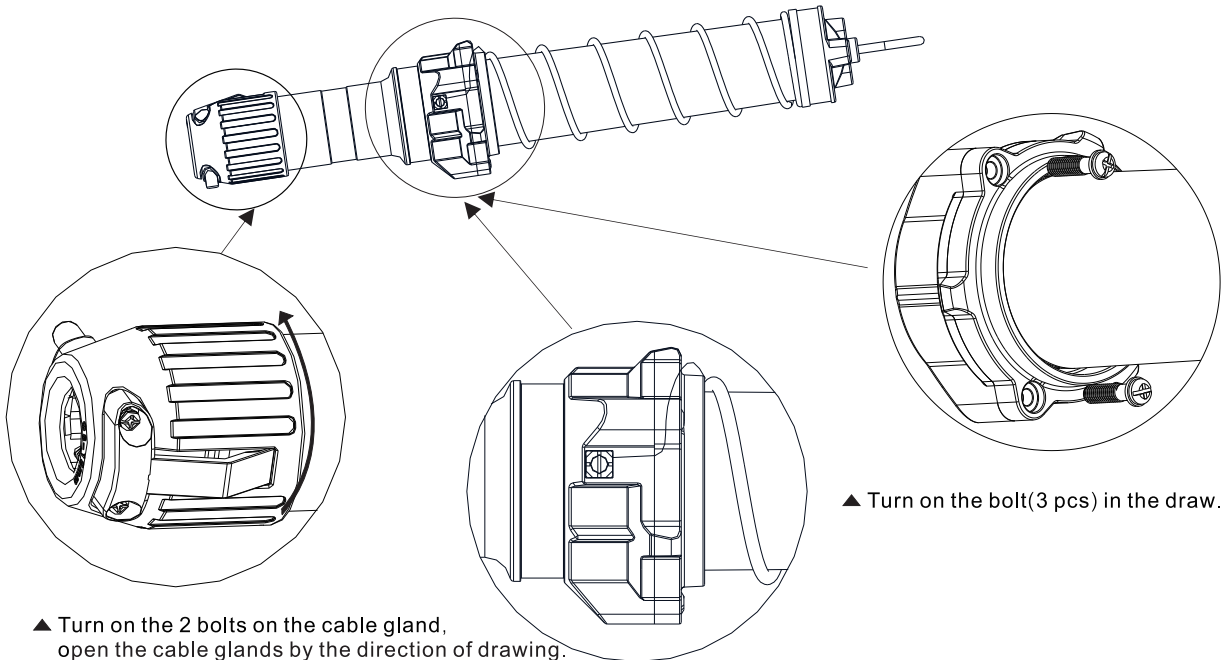
CZ1260 Explosion-proof equipment light fittings(fixed) mounting diagram

Fixed trestle mounting holes diagram

Note: 1. As the request of customer, the equipment light can be optional fixed bracket with magnet, which is used for equipment illumination, moving light body for adjusting the lighting angle.

Wiring diagram

◎ According to the below drawing diagram before connecting wire, open the fastener on the light one by one (the explosion-proof light is similar to this draw)

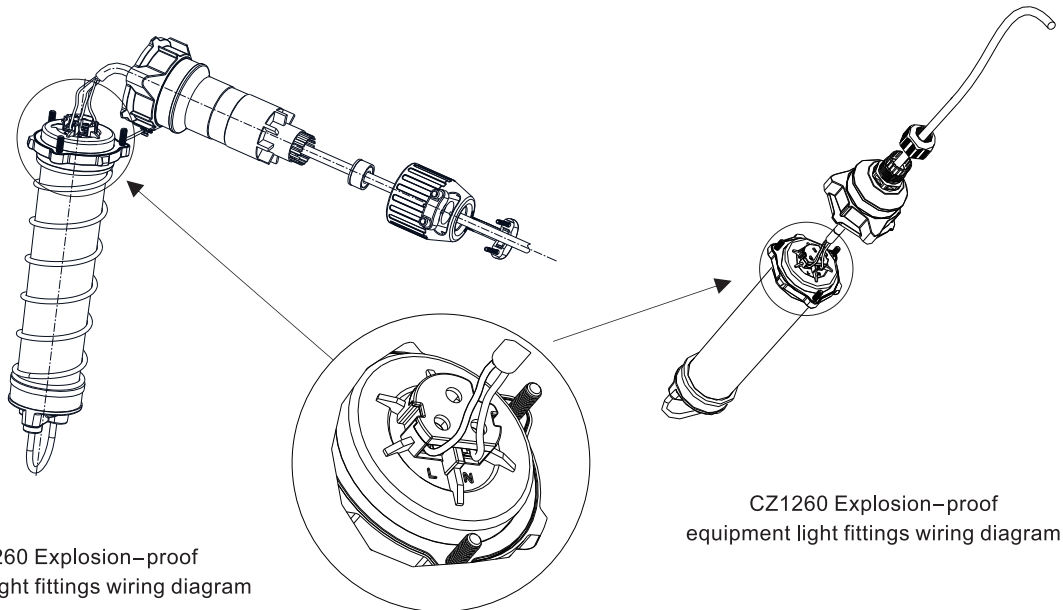


▲ Turn on the 2 bolts on the cable gland, open the cable glands by the direction of drawing.

▲ The earth stud should be connected, mustn't disassembly.

▲ Turn on the bolt(3 pcs) in the draw.

◎According to the below draw, connect the cable to cable clamp and cable gland, the n connect to the terminals in the light.



Installation/operation

◎Transport and storage in original packaging only national safety and installations regulations and the generally accepted rules of engineering practice must be observed when installing and operating this equipment.

◎In order to guarantee that the explosion-proof overhaul (equipment) light fittings normal work and the security, the user must observe following stipulated:

●The series products is suitable for the explosive hazardous area zone 1, zone 2 and the dust hazardous zone 21 and zone 22. The product can be used indoors and outdoors.

●The ambient temperature is not lower than $-40^{\circ}\text{C}/-20^{\circ}\text{C}$, not higher than $+40^{\circ}\text{C}/+50^{\circ}\text{C}$.

●The explosion-proof overhaul (equipment) light fittings should be used under the following atmospheric condition:

The pressure is $80\text{kPa}(0.8\text{bar})\sim 110\text{kPa}(1.1\text{bar})$

The volume ratio of standard oxygen content is 21% air.

●Be handled with care of the cable connection:

It's not allowed for the wires connected loose. Wires must not be damaged.

●Only specified cable entry can be used.

●To confirm the cable gland is sealed.

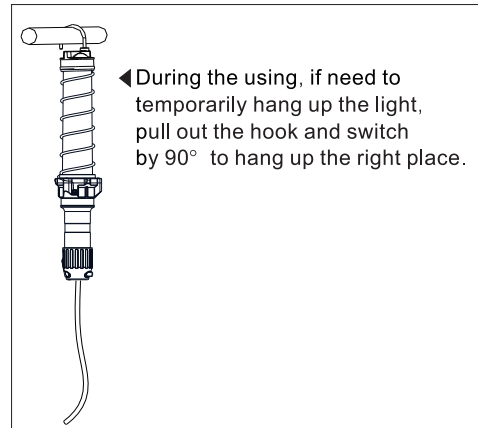
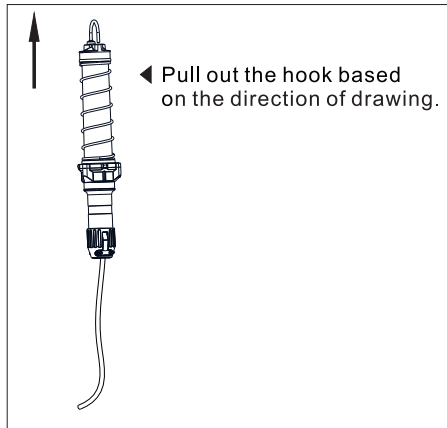
●To confirm the outer diameter of the using cable is in the diameter range of lead-in cable.

●To prevent accumulation of electrostatic charge, only damp cloth can be used during the cleaning!

●The equipment must be protected from mechanical impacts. If damages occurred, the equipment must be removed from the hazardous area.

●Do not rub on the plastic enclosure of this equipment.

●The non-metallic parts of the enclosure shall not be exposed to frequent temperature changes.



Being operation

- ◎ Before being operational, should carry on the test according to the stated method in the related rule.
- ◎ Before being operational, you should examine the lighting fittings' correct function and mounting according to this instruction and other feasible regulation.
- ◎ There will be a temperature rise on the surface of light fitting when it is used and it is normal phenomena.
- ◎ Earthing connections must be checked and observed in accordance with user manual.

Accessories/spare parts

Only original spare parts as well as original accessories made by CZ Electric Co.,LTD. can be used.

Maintenance

- ◎ Observes strictly your country control overhaul and standard. The spare parts which have the important effect to explosion-proof performance must inspect carefully and specially. All the maintenance and repair must use the original component made CZ Electric Co.,LTD. replacing and repairing should take by professional electrician!
- ◎ The following points must be checked during maintenance:
 - when cable entires sealing ageing,must be change in time.
 - Check if all the seals are in the hermetic working state.
 - Check if the flameproof thread is damaged.
 - Check if the wiring is loose.
- ◎ Notice: You should often carry through the maintenance to make he light fitting all right, checking at least one time each year.

Disposal/recycling

The respective valid national regulations for disposal of waste shall be observed strictly when disposing of apparatus! We are pleased to answer any special questions you may have Please contact your nearest CZ service station.