

Technische informatie:



Ex markering: $\text{Ex II 2 G Ex eb ib mb IIC Gb}$
 $\text{II 2 D Ex ib tb IIIC Db}$
 Geschikt voor zone 1, 2, 21 en 22
 Omgevingstemperatuur: $-40^{\circ}\text{C} \leq T_a \leq +55^{\circ}\text{C}$
 Beschermingsgraad: IP66
 Spanning: 20.. 230 V AC/DC - 50/60 Hz.
 Geluidsdruk: 60 dB(A) op 30 cm
 Lichtsterkte: ca. 2000 mcd
 Geschikt voor inbouw in Exe of Exd kast

Conform de standaards IEC60079 en EN60079

Technical data:

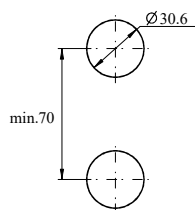
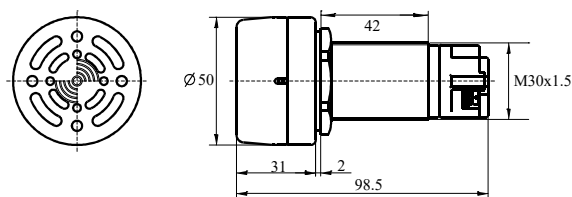
Ex mark: $\text{Ex II 2 G Ex eb ib mb IIC Gb}$
 $\text{II 2 D Ex ib tb IIIC Db}$
 Can be used in zone 1, 2, 21 and 22
 Ambient temperature: $-40^{\circ}\text{C} \leq T_a \leq +55^{\circ}\text{C}$
 Degree of protection: IP66
 Voltage: 20/250 V DC/VAC - 50 / 60Hz.
 Sound pressure: 60 dB (at 30 cm)
 Lighting: aprox 2000 mcd
 For mounting in Exe or Exd box

Meets the standards IEC-EN60079

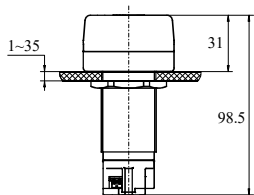
Afbeelding Illustration	Omschrijving Description	Type
	Flitsers, buzzer combinatie met rode lens 20 .. 250 V AC/DC Flash type buzzer with red cover 20 .. 250 V AC/DC	Z1208 - F71
	Buzzer met zwarte lens 20 .. 250 V AC/DC Buzzer with black cover 20 .. 250 V AC/DC	Z1208 - B71

Afmetingen Dimensions

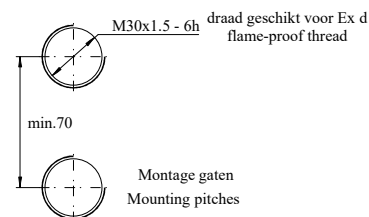
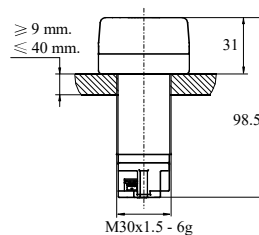
Installatie methode voor Ex e kasten Installation diagram for Ex e boxes



Montage gaten
Mounting pitches



Installatie methode voor Ex d kasten Installation diagram for Ex d boxes



Montage gaten
Mounting pitches

De Buzzer kan direct gemonteerd worden in een Ex d behuizing
 The buzzer can be screwed directly onto the Ex d boxes