

## Polyamide kabelwartel Ex e Polyamide cable gland Ex e

### Technische informatie:

Ex marking: Ⓜ II 2G Ex eb IIC T6 Gb

Ⓜ II 2D Ex tb IIIC Db

Geschikt voor zone 1, 2, 20, 21 and 22

Omgevingstemperatuur:  $-40^{\circ}\text{C} \leq \text{Ta} \leq 70^{\circ}\text{C}$

Beschermingsgraad: IP66

Materiaal: Polyamide

Conform de standaards: IEC60079 en EN60079

### Technical data:

Ex mark: Ⓜ II 2G Ex eb IIC T6 Gb

Ⓜ II 2D Ex tb IIIC Db

Can be used in zone 1, 2, 20, 21 and 22



Ambient temperature:  $-40^{\circ}\text{C} \leq \text{Ta} \leq 70^{\circ}\text{C}$

Degree of protection: IP66

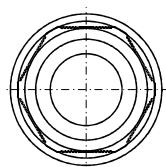
Material: Polyamide

Meets the standards: IEC60079 and EN60079

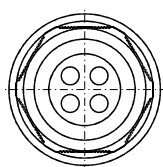
## Polyamide kabelwartel Ex e Polyamide cable gland Ex e

Afbeelding Illustration	D	C		K (mm)	Tap lengte Thread length		LH (mm)	Type
		Min.	Max.		L (mm)	LT		
 Ex e	M12x1.5	4	7	15	8	12	22	IE2012
	M16x1.5	5.5	10	20	8	12	27	IE2016
	M20x1.5	5.5	13	24	8	13	31	IE2020
	M25x1.5	8	17.5	29	8	13	36	IE2025
	M32x1.5	12	21	36	10	15	43	IE2032
	M40x1.5	17	28	46	10	15	47	IE2040
	M50x1.5	22	35	55	12	16	54	IE2050
	M63x1.5	27	48	68	12	16	57	IE2063
	M25x1.5	4x3	4x6	29	11	-	36	IE2024
	M32x1.5	4x5	4x7	36	12	-	43	IE2034
<b>Polyamide kabelwartel Ex i Polyamide cable gland Ex i</b>								
	D	C		K (mm)	Tap lengte Thread length		LH (mm)	Type
		Min.	Max.		L (mm)	LT		
 Ex i	M12x1.5	4	7	15	8	12	22	IE2012 BU
	M16x1.5	5.5	10	20	8	12	27	IE2016 BU
	M20x1.5	5.5	13	24	8	13	31	IE2020 BU
	M25x1.5	8	17.5	29	8	13	36	IE2025 BU
	M32x1.5	12	21	36	10	15	43	IE2032 BU
	M40x1.5	17	28	46	10	15	47	IE2040 BU
	M50x1.5	22	35	55	12	16	54	IE2050 BU
	M63x1.5	27	48	68	12	16	57	IE2063 BU
	M25x1.5	4x3	4x6	29	11	-	36	IE2024 BU
	M32x1.5	4x5	4x7	36	12	-	43	IE2034 BU

## Afmetingen Dimensions



Enkelvoudig  
Single-hole type



Meervoudig  
Multi-hole type

