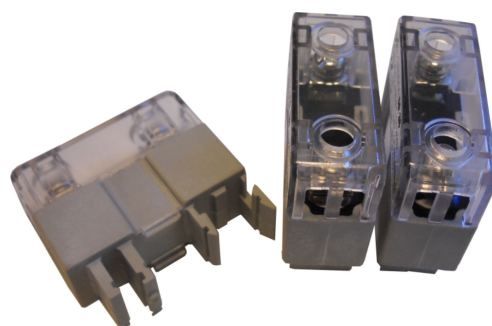




Product manual fuses Z0804



INDEX ELEKTRO BV
Harregatplein 15
3214 VP Zuidland
Netherlands



T. +31(0)181 452120
<http://www.indexelektro.nl>
email info@indexelektro.nl

Z0804-Rev.15.12.17



Purpose of these instructions

Working in hazardous areas, the safety of personnel and plant depends on complying with all relevant safety regulations. Assembly and maintenance staff working on installations therefore have a particular responsibility. They require precise knowledge of the applicable standards and regulations.

These instructions give a brief summary of the most important safety measures. It supplements the corresponding regulations which the staff must study.



SAFETY INSTRUCTIONS

- Use the explosion-proof fuse for its intended purpose
- Incorrect or impermissible use or non-compliance with these instructions invalidates our warranty provision.
- No changes to the device impairing its explosion protection are permitted.
- Use the fuse only if they are clean and undamaged.
- Any damage can invalidate the Ex-protection.
- Observe the following during installation and operation:
 - * National safety regulations
 - * National accident prevention regulations;
 - * National installation regulations(e.g. IEC 60079-14);
 - * Generally recognized technical regulations;
 - * Safety guidelines in these operating instructions;
 - * Characteristic values given on the explosion-proof signal lamp with button module.

Conformity to standards

The explosion-proof switch module is designed and manufactured according to standard of ISO 9001.

The explosion-proof switch module is conformity to the directive 94/9/EC, ATEX and the following standards:

IEC60079-0 : 2007	EN60079-0 : 2009
IEC60079-7 : 2006	EN60079-7 : 2007
IEC60079-18 : 2004	EN60079-18 : 2005

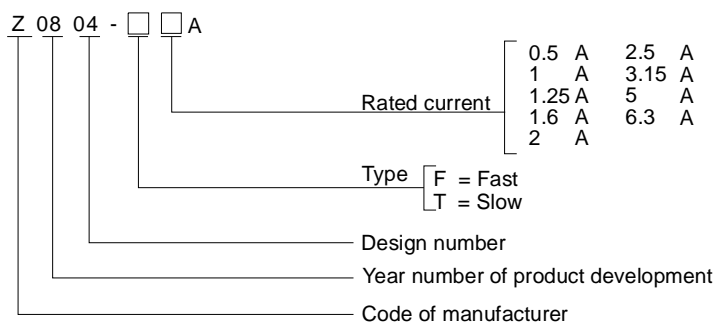
Applicable scope

The fuse is suitable for use in control circuits with rated working voltage 250 VAC or below and current is up to 6.3 A a

The fuse is suitable for zone 1 and 2



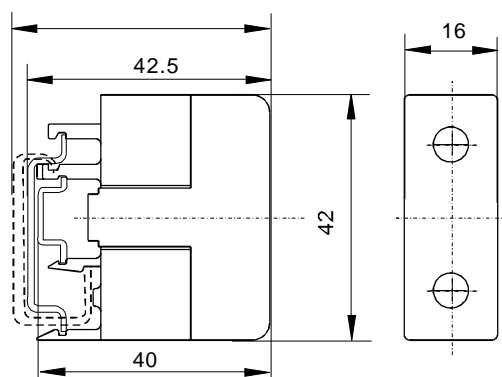
Model and implication



Technical data

- Ex mark: II 2 G Ex emb IIC Gb
- Test certificate: DNV12 ATEX 11180U / IECEx CQM 11.0009U
- Degree of protection: IP20
- Rated voltage: 250 VAC/DC
- Ambient temperature: -55°C to +60°C.
- Mounting: TS35x7.5, TS15x5.5 DIN rail
- Connect type: Terminal 2,5 mm², wire insulation stripping 8 mm.
- Tightening torque: 0.6 ~ 0.8 Nm

Dimensions





Operation / installation

- Transport and storage in original packaging only. National safety and installations regulations and the generally accepted rules of engineering practice must be observed when mounting and operating this equipment.
- For the sake of ensuring normal operation and safety of the fuse must abide by the following provisions:
 - * The fuse is designed to be used under the following atmospheric conditions:
 - The pressure is 80kPa(0.8bar)~110kPa(1.1bar)
 - The volume ratio of standard oxygen content is 21% air.
 - * This product should be enclosed in explosion-proof enclosure which is fitted to the environment.
 - * This series of products only can be used together with the operating head.
 - * Proposed tightening screw torque: 0.6 ~0.8 Nm.
 - * The module mounting should be firm and reliable.
 - * The supply terminals are designed for the connection of $\leq 2.5 \text{ mm}^2$ max two brass conductors (IEC60947-7-1).
if multi- or fine - wire connecting cables are used, the wiring ends will have to be handled in accordance with the applicable national and international rules.
 - * The fuse itself shall not be damaged.

Spare parts

- Use only original spare parts as well as original accessories made by INDEX ELEKTRO BV.

Repairs / Maintenance

- Observe the relevant national regulations for your country!
- Only parts from our company that can be used to replace or maintain, and the operation should be carried out by professional electrician!
- The following points must be checked during maintenance:
 - * Compliance with permitted temperatures;
 - * Check if there is any crack in the explosion-proof load isolation switch module;
 - * Check if the product has been fixed reliably.
 - * Check the wiring
 - * Check if the flame-proof joints is damaged.

Recycling / Disposal

- The respective valid national regulations for waste disposal shall be observed when disposing of apparatus!
- We are pleased to answer any questions. In this case you can contact INDEX ELEKTRO BV.